

# PRODUCTS

## CATALOGUE

- ✔ Hydraulic Hose Fittings
- ✔ Hydraulic Adapters
- ✔ OEM&ODM



**ZHEJIANG TIANXIANG MACHINE FITTINGS CO.,LTD**  
**ZHUJI CITY JIANGRU IMPORT AND EXPORT CO.,LTD**

# HYDRAULIC HOSE FITTING

Our company has been engaged in the production of hydraulic hose fitting with Eaton standard for more than 20 years .including DIN,JIC,BSP, BSPT, NPT, ORFS and other types.We have a large inventory of quality Spare parts to meet our clients requirements.

- ▶ High Quality and Competitive Price
- ▶ Plentiful Supply Of Stock
- ▶ Fast Delivery



JIC/ORFS/METRIC/BSP/SAE/UNF/HYDRAULIC HOSE FITTING/ONE PIECE/  
BANJO FITTING/WASHING FITTING/INTERLOCK FITTINGS



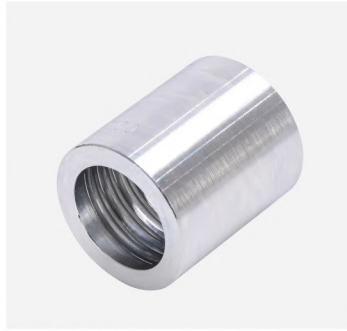
# SWAGED HOSE FITTING



**P/N:00TF0**  
Ferrule for teflon hose



**P/N:00018**  
Ferrule for sae 100r7 hose



**P/N:00110**  
Ferrule for sae 100r1at/en853 1sn hose



**P/N:00210**  
Ferrule for sae 100r2at/din 20022 2sn hose



**P/N:00400**  
Ferrule for 4sp,4sh/10-16,r12/06-16 hose



**P/N:00402**  
Sae r12/4sh ferrule (manuli m00900/10/20)



**P/N:00621**  
Interlock ferrule for r13/r15 hose



**P/N:03310**  
Ferrule for sae 100r2at/en 853 2sn hose



**P/N:00400-F**  
Customized ferrule



**P/N:10411/10511**  
Metric male 24° cone seat L.T/H.T



**P/N:12611**  
BSP male



**P/N:12611A**  
BSP male double use for 60° cone seat or bonded seal



**P/N:12611L**  
Customized length BSP male



**P/N:13011**  
BSPT male



**P/N:14211**  
ORFS male o-ring seal



**P/N:15611**  
NPT male

# SWAGED HOSE FITTING



**P/N:16711**  
JIC male



**P/N:18611**  
JIS metric male 60° cone seal



**P/N:20111**  
Metric female multiseal



**P/N:20211**  
Metric female flat seat



**P/N:20411/20511**  
Metric female 24° cone o-ring L.T/H.T



**P/N:20411C**  
Metric female 24° cone without o-ring L.T



**P/N:20411W**  
Metric female 24° cone o-ring L.T thrust-wire-nut



**P/N:20711**  
Metric female 74° cone seat



**P/N:21611**  
NPSM female 60° cone sae



**P/N:22611**  
BSP female 60° cone



**P/N:24211**  
ORFS female flat seat



**P/N:26711**  
JIC female 74° cone seat sae



**P/N:40011**  
Welding fitting



**P/N:50011**  
Metric standpipe straight



**P/N:700M**  
Metric bolt



**P/N:720B-B**  
Parker standard bolt



# SWAGED HOSE FITTING



**P/N:720B**  
BSP bolt



**P/N:70011**  
Metric banjo



**P/N:72011**  
BSP banjo



**P/N:87311/87611**  
Sae flange 3000psi/6000psi



**P/N:87911**  
Sae flange 9000psi



**P/N:90011**  
Double connector



**P/N:20241**  
45°metric female flat seat



**P/N:20441/20541**  
45°metric female 24° cone o-ring L.T/ H.T



**P/N:20741**  
45°metric female 74° cone seat



**P/N:22641**  
45°BSP female 60°cone



**P/N:24241**  
45°ORFS female flat seat



**P/N:26741**  
45°JIC female 74° cone seat sae



**P/N:20191**  
90°metric female multiseal



**P/N:20291**  
90°metric female flat seat



**P/N:20491/20591**  
90°metric female 24° cone o-ring  
L.T/H.T



**P/N:20491C**  
90°metric female 24° cone without  
o-ring L.T

# SWAGED HOSE FITTING



**P/N:20791**

90°metric female 74° cone seat



**P/N:22691**

90°BSP female 60°cone



**P/N:22691K**

90°BSP compact female 60° cone seat sae



**P/N:24291**

90°ORFS female flat seat



**P/N:26791**

90°JIC female 74° cone seat sae



**P/N:26791K**

90°JIC compact female 74° cone seat sae



**P/N:50091**

90°metric standpipe straight



**P/N:87391/87691**

90°Sae flange 3000psi/6000psi



**P/N:87391L/87691L**

90°Sae flange 3000psi/6000psi long drop



**P/N:87991**

Sae flange 9000psi



**P/N:FL/FS**

Sae split flange clamps 3000psi/6000psi



**P/N:15611N**

NPT female



# INTERLOCKHOSE FITTING



**P/N:15613**  
Npt male interlock fitting



**P/N:16713**  
Jic male interlock fitting



**P/N:20413/20513**  
Metric female 24° cone o-ring L.T/H.T interlock fitting



**P/N:22613**  
Bsp female 60° cone one piece interlock fitting



**P/N:24213**  
ORFS female flat seat interlock fitting



**P/N:26713**  
Jic female 74° cone seat sae interlock fitting



**P/N:87313/87613**  
Sae flange 3000psi/6000psi interlock fitting



**P/N:87913**  
Sae flange 9000psi interlock fitting



**P/N:87343/87643**  
45° sae flange 3000psi/6000psi interlock fitting



**P/N:22693**  
90° bsp female 60° cone interlock fitting



**P/N:24293**  
90° orfs female flat seat interlock fitting



**P/N:26793**  
90° jic female 74° cone seat sae interlock fitting



**P/N:87393/87693**  
90° sae flange 3000psi/6000psi interlock fitting



**P/N:87993**  
90° sae flange 9000psi interlock fitting

# DOUBLE HEXAGON HOSE FITTING



**P/N:22611D**

BSP female 60° double hexagon



**P/N:24211D**

ORFS female flat seat double hexagon



**P/N:26711D**

JIC female 74° double hexagon



**P/N:28611D**

JIS metric female 60° double hexagon



**P/N:29611D**

JIS gas female 60° double hexagon



**P/N:24241D**

45° ORFS female flat seat double hexagon



**P/N:26741D**

45° JIC female 74° double hexagon



**P/N:22691D**

90° BSP female 60° double hexagon



**P/N:24291D**

90° ORFS female flat seat double hexagon



**P/N:28691D**

90° JIS metric female 60° double hexagon



# ONE PIECE FITTING



**P/N:15611RW**  
NPT male one piece



**P/N:16711RW**  
JIC male one piece



**P/N:20411/20511RW**  
Metric female 24° cone o-ring L.T/H.T one piece



**P/N:22611RW**  
BSP female 60° cone one piece



**P/N:34211RW**  
90°ORFS female flat seat one piece



**P/N:26711RW**  
JIC female 74° cone seat sae one piece



**P/N:26711DRW**  
JIC 74° cone seat sae double hexagon one piece



**P/N:87311/87611RW**  
Sae flange 3000psi/6000psi one piece



**P/N:20491/20591RW**  
90°metric female 24° cone o-ring L.T/H.T one piece



**P/N:22691RW**  
90°BSP female 60° cone one piece



**P/N:24291RW**  
90°ORFS female flat seat one piece



**P/N:26791RW**  
90°JIC female 74° cone seat sae one piece



**P/N:87391/87691RW**  
90°sae flange 3000psi/6000psi one piece

# WASHING FITTING(KARCHER)



P/N:WASHING FITTING1



P/N:WASHING FITTING2



P/N:WASHING FITTING3



P/N:WASHING FITTING4



P/N:WASHING FITTING5



P/N:WASHING FITTING6



P/N:WASHING FITTING7



P/N:WASHING FITTING8



P/N:WASHING FITTING9



P/N:WASHING FITTING10



P/N:WASHING FITTING11



P/N:WASHING FITTING12



P/N:WASHING FITTING13



P/N:WASHING FITTING14



# HYDRAULIC ADAPTER

All of our adaptors are available with different thread types and in different sizes. if you can not find the adaptors you are looking for, get in touch with our sales team. so we can find it for you.

- ▶ High Quality And Competitive Price
- ▶ Plentiful Supply Of Stock
- ▶ Fast Deliovery



DIN/SAE/UNF/BSP/JIC/NPT/ORFS/OTHER SIZES & TYPES  
SUPPORT CUSTOMIZE SIZE & TYPE

# DIN SERIES



**P/N:1C(REDUCERS)**  
Straight reducers



**P/N:1C**  
Metric male 24° cone L.T/BSP male with captive seal



**P/N:1CB-WD**  
Metric male 24° cone L.T/BSP male with captive seal



**P/N:1CG**  
BSP thread stud ends with O-ring sealing



**P/N:1CI(PARKER)**  
Metric banjo tube fitting



**P/N:1CI-B**  
BSP banjo tube fitting



**P/N:1CH**  
Metric thread stud ends



**P/N:1CM-WD**  
Metric thread with captive seal



**P/N:1CI**  
Metric banjo tube fitting



**P/N:1CT**  
BSPT male /metric male 24° cone l.t



**P/N:1CW**  
Metric weld fitting



**P/N:1CO**  
UN.UNF THREAD thread stud ends with o-ring sealing



**P/N:1CN**  
NPT male /metric male 24° cone l.t



**P/N:2C**  
Reducer tube adapter with swivel nut



**P/N:2BC-WD**  
BSP thread with captive seal/metric female 24° cone o-ring sealing



**P/N:2GC**  
BSP thread stud ends with o-ring sealing /metric female 24° cone o-ring sealing



# DIN SERIES



**P/N:3C**  
Straight tube adapter with swivel nut



**P/N:5CB**  
Metric male thread /BSP female nut



**P/N:5CM**  
Metric male thread /metric female nut



**P/N:6C**  
Metric male straight bulkhead fitting



**P/N:4C**  
Metric male thread plug



**P/N:4C-WD**  
Metric male thread plug with captive seal



**P/N:8C**  
Metric lock nut



**P/N:1CG9-OG**  
90°BSP thread adjustable stud ends with o-ring sealing



**P/N:1CH9-OG**  
90°metric thread adjustable stud ends



**P/N:1CT9**  
90°BSPT male /metric male 24°cone l.t



**P/N:1CN9**  
90°NPT male /metric male 24°cone l.t



**P/N:1C9**  
90°metric male 24°cone l.t



**P/N:1CO9-OG**  
UN.UNF thread adjustable stud ends with o-ring sealing



**P/N:2C9**  
90°reducer tube adapter with swivel nut



**P/N:3C9**  
90°straight tube adapter with swivel nut



**P/N:6C9**  
90°metric male bulkhead fitting

# DIN SERIES



**P/N:ACCG-OG**

BSP thread adjustable stud end  
with o-ring sealing run tee



**P/N:AC**

Metric male 24° cone I.t. equal tees



**P/N:BC**

Brandch tee fitting with swivel nut



**P/N:CC**

Run tee fittings with swivel nut



**P/N:NL/NS**

Retaining nuts



**P/N:RL/RS**

Cutting ring



**P/N:1C-RN**

Metric male 24° cone I.t./NPT male  
with cutting ring and nut



**P/N:VKA**

vka



# BSP SERIES



**P/N:1B**

BSP male double use for 60° seat



**P/N:1B-WD**

BSP male double use for 60° seat or bonded seal/BSP male captive seal



**P/N:1BN/1BT**

BSP male double use for 60° seat or bonded seal/BSPT(NPT) male



**P/N:2B**

BSP male double use for 60° seat or bonded seal/BSP female 60° cone



**P/N:1BG9-OG**

90° BSP male 60° seat/BSP male o-ring adjustable stud end



**P/N:1BN9/1BT9**

90° elbow BSP male 60° seat/NPT male



**P/N:2B9**

90° BSP male double use for 60° seat or bonded seal/BSP female 60° cone



**P/N:4B**

BSP male double use for 60° seat or bonded seal plug



**P/N:4BN-WD(SS)**

BSP male captive seal plug



**P/N:5B-WD**

BSP male captive seal/BSP female



**P/N:6B**

BSP male 60° seat bulkhead



**P/N:7B**

BSP female



**P/N:9B**

BSP female 60° cone plug



**P/N:CB**

BSP male 60° seat/BSP female 60° cone branch tee



**P/N:DB**

BSP female 60° cone tee



**P/N:GB**

BSP female tee



# JIC SERIES



**P/N:1J**  
JIC male 74° cone



**P/N:1JO**  
JIC male 74° cone /sae o-ring



**P/N:1JFL**  
JIC male 74° cone /I-series flange



**P/N:1JG**  
JIC male 74° cone/BSP male o-ring



**P/N:1JN**  
JIC male 74°/NPT male



**P/N:1JT**  
JIC male 74°/BSPT male



**P/N:2J**  
JIC female 74° cone/JIC male 74° cone



**P/N:5J**  
JIC male/JIC female



**P/N:5JT**  
JIC male 74° cone/BSPT female



**P/N:5JN**  
JIC male 74°/NPT female



**P/N:1JN4**  
45°elbow JIC male 74° cone/NPT male



**P/N:1JT4**  
45°elbow JIC male 74° cone/BSPT male



**P/N:1JG4**  
45°elbow JIC male 74° cone /BSP male o-ring



**P/N:2J4**  
45° JIC female 74° cone/JIC male 74° cone



**P/N:1JN9**  
90°elbow JIC male 74° cone/NPT male



**P/N:1JT9**  
90°elbow JIC male 74° cone/BSPT male

# JIC SERIES



**P/N:1J9**  
90°elbow JIC male 74°cone



**P/N:2J9**  
90°JIC female 74° cone/JIC male 74° cone



**P/N:6J9**  
JIC female 74° cone bulkhead



**P/N:1JO9**  
90°elbow JIC male 74°cone /sae o-ring



**P/N:1JG9-OG**  
90°elbow JIC male 74°cone /sae o-ring boss I-series



**P/N:1JH9-OG**  
90°elbow JIC male 74°cone /metric adjustable stud end I-series



**P/N:6J-LN**  
JIC female 74° cone bulkhead



**P/N:9J-CAP**  
JIC female plug



**P/N:4J**  
JIC male 74°cone plug



**P/N:9J**  
JIC female 74°seat plug



**P/N:AJ**  
JIC male 74° cone tee



**P/N:BJ**  
JIC male 74° cone/JIC female branch tee



**P/N:CJ**  
JIC male 74° cone/JIC female 74° seat run tee



**P/N:AJO-OG**  
JIC male 74°cone/sae o-ring run tee



**P/N:AJOJ-OG**  
JIC male 74° cone/sae o-ring run tee



# NPT SERIES



**P/N:1N**  
NPT male



**P/N:1T**  
BSPT male



**P/N:2NJ**  
NPT male / JIC female 74° seat



**P/N:2NU**  
NPT male / NPSM female 60° cone



**P/N:7NU**  
NPT female / NPSM female 60° cone



**P/N:5N**  
NPT male / NPT female



**P/N:7N**  
NPT female



**P/N:9N**  
NPT female plug



**P/N:1N9**  
90° NPT male



**P/N:1T9**  
90° BSPT male



**P/N:5N9**  
90° NPT male / NPT female



**P/N:7N9**  
90° NPT female



**P/N:2NJ9**  
90° NPT male / JIC female 74° seat



**P/N:2NU9**  
90° NPT male / NPSM female 60° cone



**P/N:AN**  
NPT male tee



**P/N:GN**  
NPT female tee



# ORFS SERIES



**P/N:1F**  
ORFS male O-ring



**P/N:1FO**  
ORFS male O-ring/SAE O-ring



**P/N:1FG**  
ORFS male O-ring/BSP male O-ring



**P/N:2F**  
ORFS male O-ring/ORFS female



**P/N:3F**  
ORFS female



**P/N:1F9**  
90°ORFS male o-ring



**P/N:2F9**  
90°ORFS male o-ring/ORFS female



**P/N:4F**  
ORFS male O-ring plug



**P/N:6F**  
ORFS male O-ring bulkhead



**P/N:9F**  
ORFS female plug



**P/N:AF**  
ORFS male O-ring tee



**P/N:BF**  
ORFS male o-ring/ORFS female run  
tee

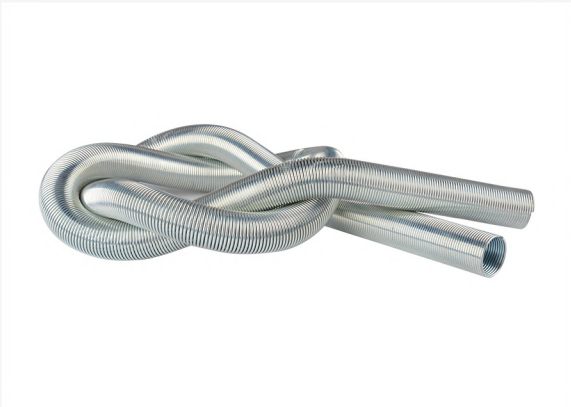


**P/N:CF**  
ORFS male o-ring/ORFS female run  
tee

# CUSTOMIZED PRODUCTS

Here, there are products that surprise you. Give me your drawings or photos. I will design independent products for you according to your description. As long as you have an idea, we can make it.

- ▶ High-Precision CNC Processing
- ▶ Fast Delivery
- ▶ Small Order Support



GASOLINE PIPE GUN / PIPE CONNECTOR / VALVES / CAMLOCK / HOSE CLAMP

# CUSTOMIZED PRODUCTS



P/N:JR001



P/N:JR002



P/N:JR003



P/N:JR004



P/N:JR005



P/N:JR006



P/N:JR007



P/N:JR008



P/N:JR009



P/N:JR0010



P/N:JR0011



P/N:JR0012



P/N:JR0013



P/N:JR0014



P/N:JR0015



P/N:JR0016



# CUSTOMIZED PRODUCTS



P/N:JR0017



P/N:JR0018



P/N:JR0019



P/N:JR0020



P/N:JR0021



P/N:JR0022



P/N:JR0023



P/N:JR0024



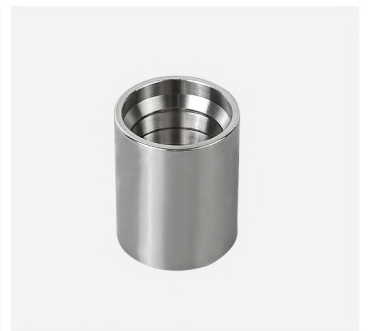
P/N:JR0025(stainless steel)



P/N:JR0026(stainless steel)



P/N:JR0027(stainless steel)



P/N:JR0028(stainless steel)



P/N:JR0029(KC)



P/N:JR0030(HOSE MENDER)



P/N:JR0031



P/N:JR0032

# CUSTOMIZED PRODUCTS



P/N:JR0033



P/N:JR0034



P/N:JR0035



P/N:JR0036



P/N:JR0037(TYPE-A)



P/N:JR0038(TYPE-B)



P/N:JR0039(TYPE-C)



P/N:JR0040(TYPE-D)



P/N:JR0041(TYPE-E)



P/N:JR0042(TYPE-F)



P/N:JR0043(DUST PLUG)



P/N:JR0044(DUST CAP)



P/N:JR0045



P/N:JR0046



P/N:JR0047



P/N:JR0048



## **CONTACT US ANYTIME**

***Cason Zhou***

**PHONE: 0086-15968518588**

**E-MAIL: [zhouhangbo@zjtianxiang.com.cn](mailto:zhouhangbo@zjtianxiang.com.cn)**

**SKYPE: sail-zhou**

***Office Add:***

**Ren Jia Wu Industrial Area , Diankou Town , Zhuji City ,Zhejiang Province ,China**

***Factory Add:***

**Zhu Jia Station Village , Diankou Town , Zhuji City , Zhejiang Province, China**